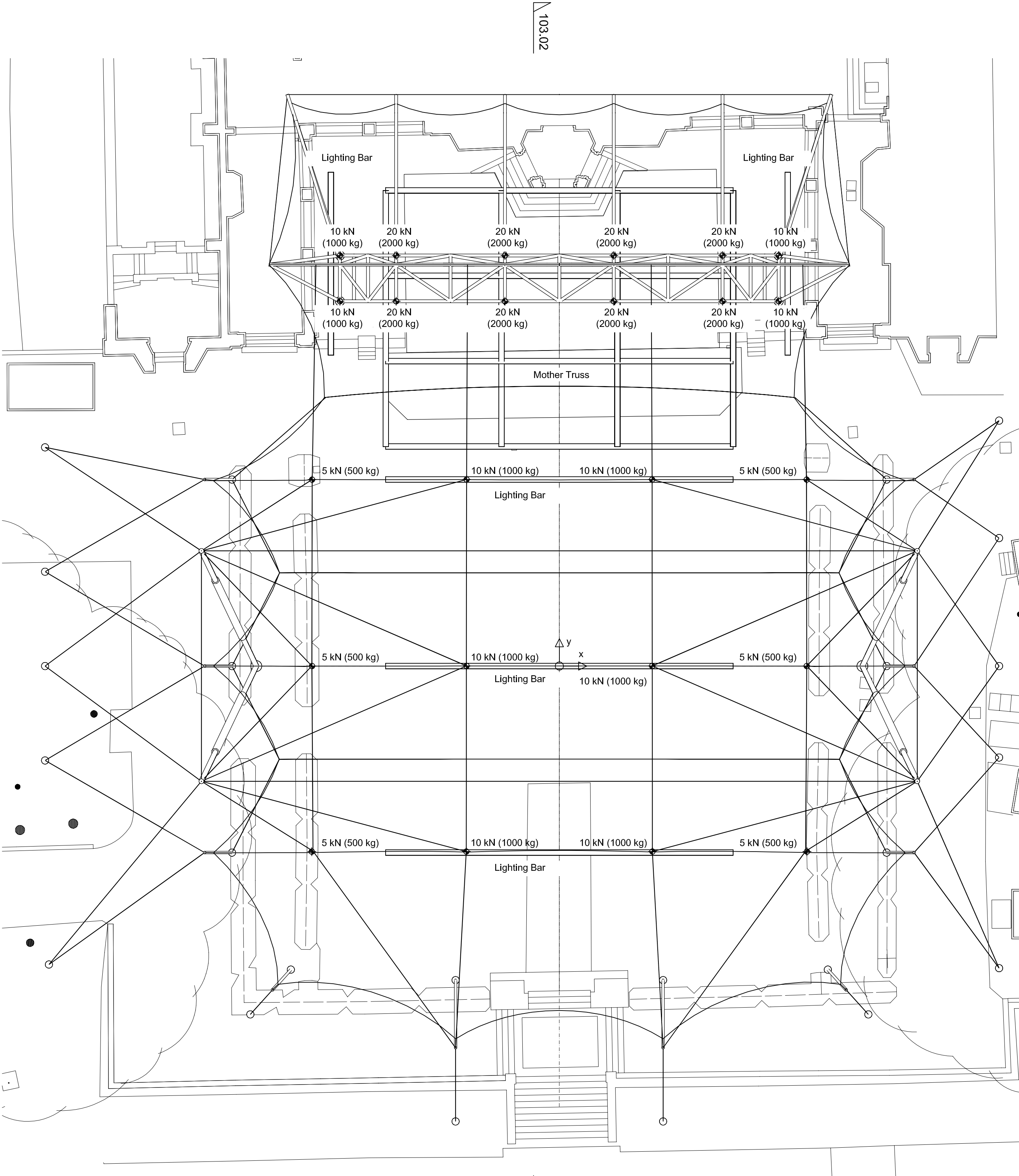


General

- Issue codes are for the purpose as follows:
Preliminary; Information; Scheme; Tender; Contract; Fabrication; as Built
- Do not scale. If in doubt, ask.
- This drawing is to be read in conjunction with all other relevant drawings, specifications and documents. Any discrepancies should be clarified with Tony Hogg Design Ltd. immediately.

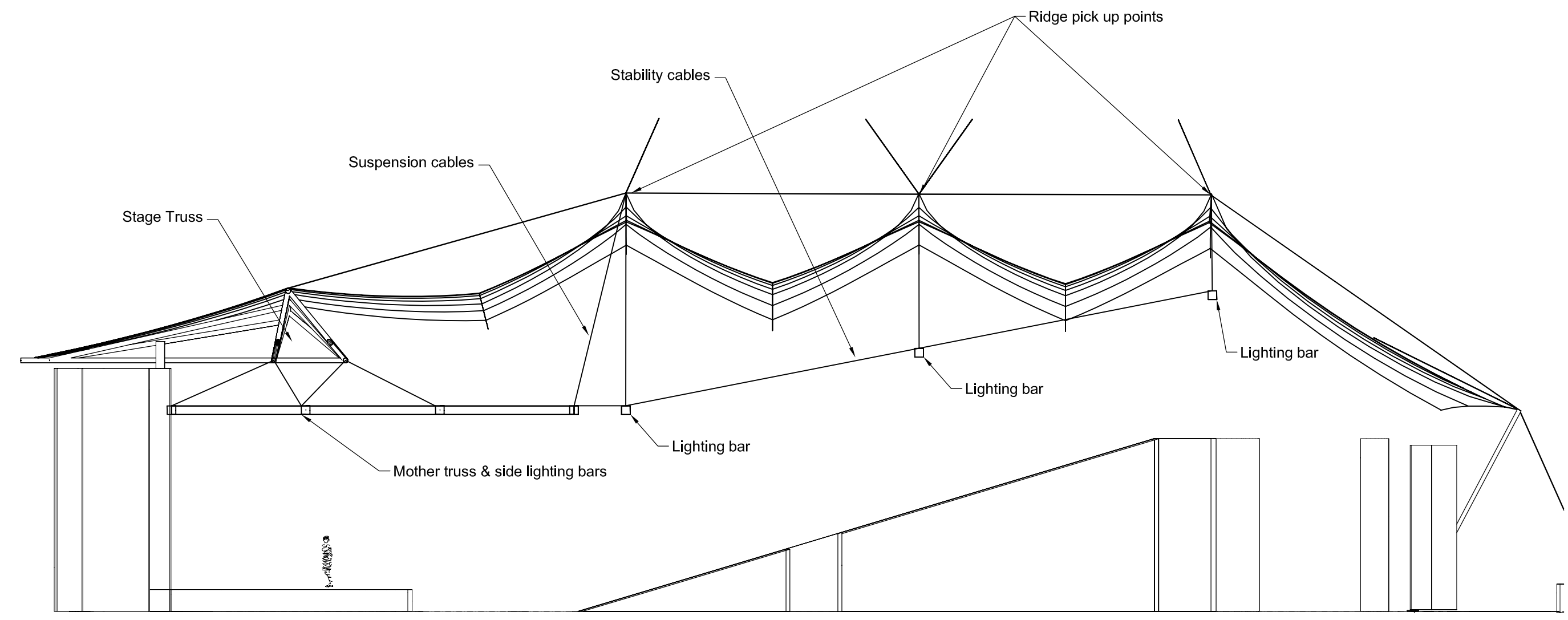
Notes



103.02

103.02

Plan
1:150 @ A1
1:300 @ A3



107.01
1:150 @ A1
1:300 @ A3

Mother truss, lighting bars, suspension cables & stability cable all by others.
Locations shown are approximate.

Maximum loads that can be suspended from the fabric ridge pick up points (5 - 10 kN) and stage truss (10 - 20 kN) are given on the plan.

rev	date	issue	chkd	comment
0	29.11.06	I	-	Issued for Information

Client

The Studio
Station Road
Chepstow
Mon. NP16 5PF
United Kingdom

T: +44 (0) 1291 638200
F: +44 (0) 1291 621991
www.architen.com
mail@architen.com

**ARCHITEN
LANDRELL**

Client project No.

Project Opera Holland Park
Theatre Canopy

Title Tensile Fabric Canopy
Lighting Truss Loads

Project No. 216
Drawing No. 107
Scale at A1 Noted
Author TH

Designers & Engineers of Tensile Fabric Structures

Head Office
2 Farleigh Court
Old Weston Road
Flax Bourton
Bristol BS48 1UR
phone +44 (0)1275 464733
fax +44 (0)1275 464166
email info@tonyhogdesign.co.uk

Shropshire Office
Mill Lane Cottage
Mill Lane
Newcastle on Clun
Shropshire SY7 8QL
phone +44 (0)1588 640756
fax +44 (0)1588 640806
web www.tonyhoggdesign.co.uk

Provisional: For design development only